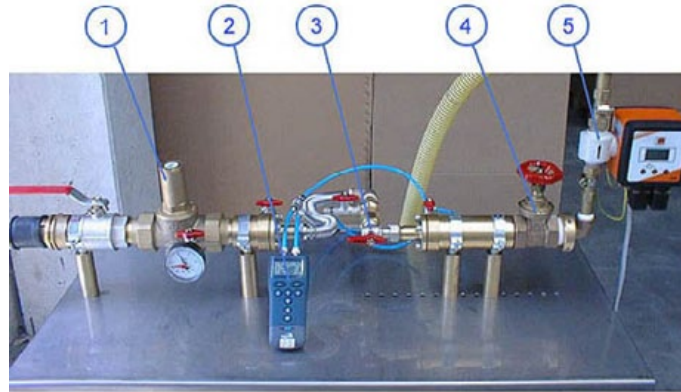


## Pressure leakages/flow rate Testing Bench



1. Pressure reducer
2. Two ways digital gauge. (For checking the circuit pressure and for measuring the fall in pressure at the two ends of the valve being tested);
3. Valve under checking;
4. Gate valve to regulate the flow rate;
5. Magneto-inductive flow rate measurer.



Differential pressure at the two ends of the valve (Pressure loss)



Magneto-inductive flow rate measurer



System pressure